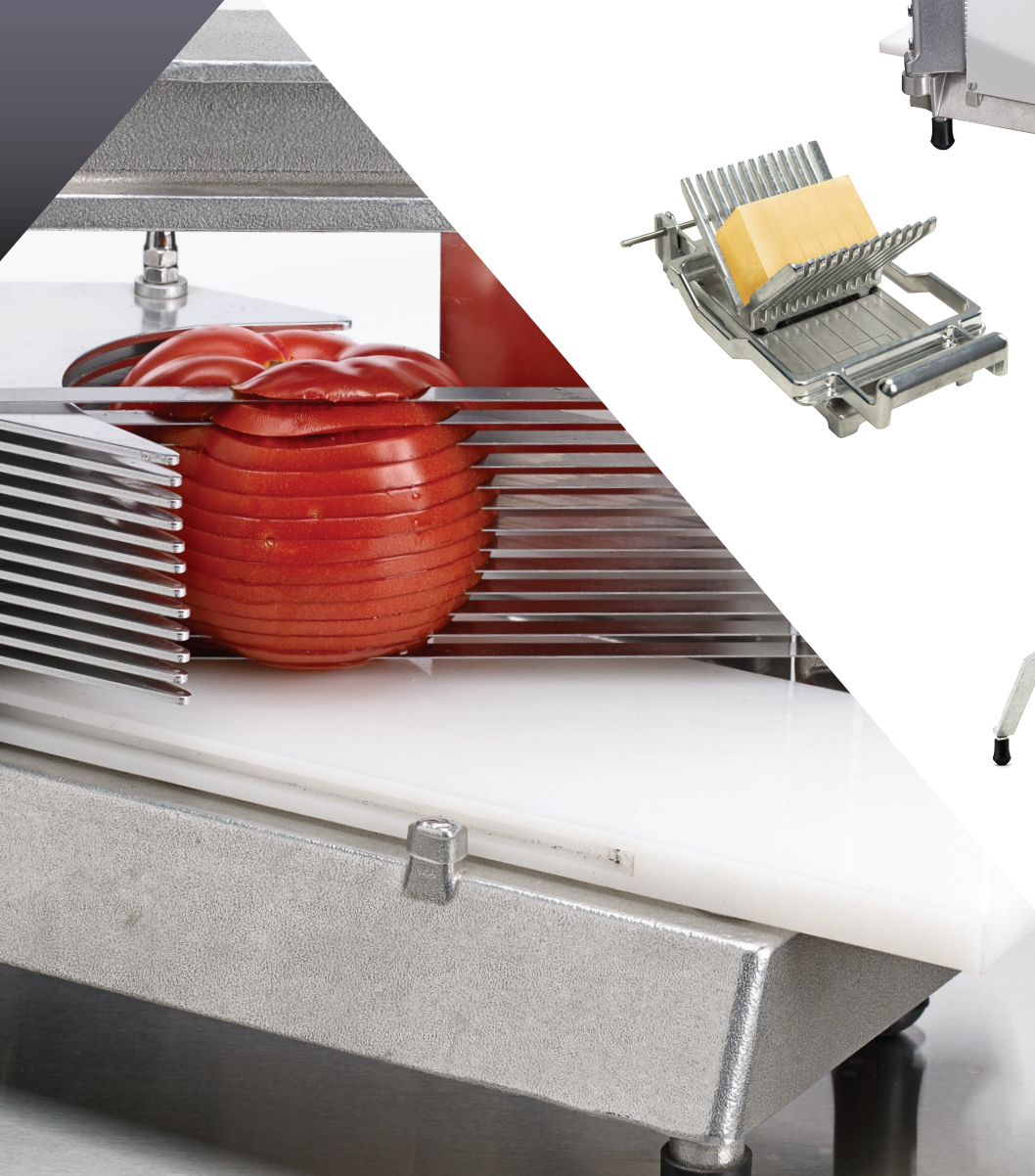


# KATTEX

by **winco**<sup>®</sup>

## Manual Food Preparation Equipment



# KATTEX

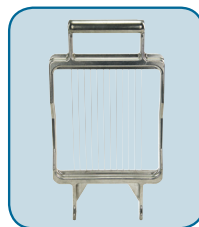
## CHEESE SLICERS

The Kattex Cheese Slicers make light work of cutting through a variety of semi-soft cheeses, resulting in uniform cuts. Ideal for portion control and faster food prep.

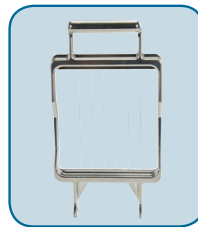
- ◆ Cast aluminum construction with stainless steel wires
- ◆ Dimensions (closed): 13.2"L x 6.7"W x 4.5"H
- ◆ Cuts 3/8" or 3/4" cheese sticks, cubes or slices
- ◆ Cleaning brush included
- ◆ NSF listed
- ◆ One year parts warranty



ITEM	DESCRIPTION	UOM	CASE
TCT-375	3/8" Blade Slicer	Each	1/4
TCT-375B	Replacement Bow for TCT-375	Set	1/10
TCT-750	3/4" Blade Slicer	Each	1/4
TCT-750B	Replacement Bow for TCT-750	Set	1/10



TCT-750B  
3/8" Slicing Blade

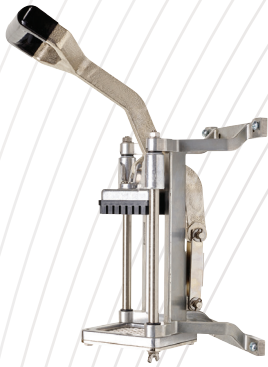


TCT-375B  
3/4" Slicing Blade



NSF TCT-SERIES

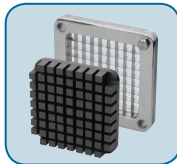
# KATTEX



HFC-375



Can be mounted to wall or counter



Replacement block and cut blade assembly

NSF HFC-SERIES



## HEAVY-DUTY QUICK-SLICE FRENCH FRY CUTTERS

- ◆ Short throw handle design for smooth uniform cuts in one stroke
- ◆ Extremely durable cast iron body with stainless steel components
- ◆ Affix to counter or wall mount; wall bracket sold separately
- ◆ Accessories to modify cut sizes and styles sold separately
- ◆ 3-3/8" x 3-3/8" cutting area
- ◆ NSF listed
- ◆ One year parts warranty

ITEM	DESCRIPTION	UOM	CASE
HFC-250	1/4" Cut French Fry Cutter	Set	1
HFC-375	3/8" Cut French Fry Cutter	Set	1
HFC-500	1/2" Cut French Fry Cutter	Set	1

### FRENCH FRY CUTTER ACCESSORIES

ITEM	DESCRIPTION	UOM	CASE
HFC-250R	1/4" Cut Replacement Blade	Set	1/48
HFC-375R	3/8" Cut Replacement Blade	Set	1/48
HFC-500R	1/2" Cut Replacement Blade	Set	1/48
HFC-250B	1/4" Cut Blade Assembly	Set	1/24
HFC-375B	3/8" Cut Blade Assembly	Set	1/24
HFC-500B	1/2" Cut Blade Assembly	Set	1/24
HFC-250K	Pusher Block for 1/4" and 1/2" Cut Blade	Each	1/24
HFC-375K	Pusher Block for 3/8" Cut Blade	Each	1/24
HFC-BK	Wall Bracket for HFC series	Each	1/12

## MEDIUM-DUTY FRENCH FRY CUTTERS

- ◆ Made of heavy-duty cast iron and fitted with sharp stainless steel blades for even slicing
- ◆ Ergonomic handles makes for easy operating and sturdy legs provide stability on flat countertop surfaces
- ◆ One year parts warranty



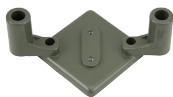
FFC-375



FFC-250B



FFC-250K



FFC-500P

ITEM	DESCRIPTION	UOM	CASE
FFC-250	1/4" Cut	Each	1
FFC-375	3/8" Cut	Each	1
FFC-500	1/2" Cut	Each	1

### FRENCH FRY CUTTER ACCESSORIES

ITEM	DESCRIPTION	UOM	CASE
FFC-250B	Blade Assembly for FFC-250	Each	24
FFC-250K	Pusher Block for FFC-250	Each	24
FFC-375B	Blade Assembly for FFC-375	Each	24
FFC-375K	Pusher Block for FFC-375	Each	24
FFC-500B	Blade Assembly for FFC-500	Each	24
FFC-500K	Pusher Block for FFC-500	Each	24
FFC-500P	Pusher Support for FFC-Series	Each	12



# KATTEX



FVS-1

## FRUIT & VEGETABLE SLICER

Save on time and labor with the Kattex Fruit & Vegetable Slicer by simply putting produce in the holder to turn out uniform slices in seconds.

- ◆ Aluminum construction with 9-1/4" stainless steel adjustable blade
- ◆ 1/16" to 1/2" slice thickness
- ◆ Mounts to countertops and other flat surfaces, can easily be removed for storage and cleaning
- ◆ Can accommodate fruits and vegetables with a maximum of 4" diameter and 5-1/2" in length
- ◆ One year parts warranty

ITEM	DESCRIPTION	UOM	CASE
FVS-1	21"L x 10-3/4"W x 16"H	Each	1/2
FVS-1B	2-Pc Replacement Blades	Set	1/10
FVS-1SB	Replacement Shaft and Blade Turntable Assembly	Each	1/6



Thickness gauge



Replacement blade



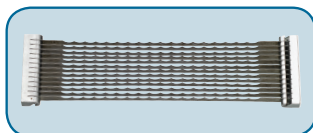
TTS-188

## TOMATO SLICERS

With one quick push, smoothly and swiftly slice tomatoes with the stainless steel Kattex tomato slicer.

- ◆ Aluminum frame with stainless steel replaceable blade
- ◆ Cuts 2 dozen tomatoes into 3/16" or 1/4" thick slices in only 1 minute
- ◆ HDPE board ensures safe & durable food processing
- ◆ Slicers come standard with table stop bracket
- ◆ NSF listed
- ◆ One year parts warranty

ITEM	DESCRIPTION	UOM	CASE
TTS-188	3/16" Blade	Set	1/4
TTS-188S	3/16" Serrated Blade	Set	1/4
TTS-250	1/4" Blade	Set	1/4
TTS-250S	1/4" Serrated Blade	Set	1/4



TTS-188S-B

## TOMATO SLICER ACCESSORIES

ITEM	DESCRIPTION	UOM	CASE
TTS-188-B	3/16" Straight Blade Assembly for TTS-2 and TTS-188	Set	1/12
TTS-188S-B	3/16" Serrated Blade Assembly for TTS-2 and TTS-188	Set	1/12
TTS-250-B	1/4" Straight Blade Assembly for TTS-3 and TTS-250	Set	1/12
TTS-250S-B	1/4" Serrated Blade Assembly for TTS-3 and TTS-250	Set	1/12
KAT-FIT	4-Pc Replacement Feet Set	Set	1



TTS-SERIES

## **FRUIT WEDGE SLICERS**

*Get quick and uniform wedges of fruit with a push of the handle. Ideal for coring and sectioning apples, lemons, limes, oranges, and tomatoes.*

- ◆ Aluminum construction with sharp stainless steel blades that minimize squeezing and bruising
- ◆ Sturdy base with non-skid feet
- ◆ 3-1/2" diameter cutting area
- ◆ NSF listed
- ◆ One year parts warranty

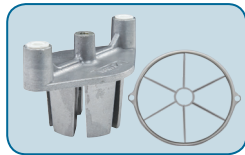


FWS-8

**NSF** FWS-SERIES



FWS-6BK  
Replacement wedge and blade for citrus fruits



FWS-6BC  
Replacement wedge and apple corer

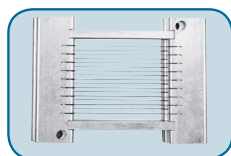
### **FRUIT WEDGE SLICER ACCESSORIES**

ITEM	DESCRIPTION	UOM	CASE
FWS-6BK	6-Section Wedger & Blade Replacement for FWS-series	Set	1/10
FWS-8BK	8-Section Wedger & Blade Replacement for FWS-series	Set	1/10
FWS-6BC	6-Slice Apple Corer for FWS-Series	Each	10
FWS-8BC	8-Slice Apple Corer for FWS-Series	Each	10
KAT-FT	4-Pc Replacement Feet Set	Set	1
KAT-BS-FH	4-Pc Replacement Bushings	Set	1



OS-250

**NSF** OS-SERIES



Blade set assembly

## **ONION SLICERS**

*Just one smooth stroke of the Kattex Onion Slicer will produce evenly sliced coins of fruits and vegetables, perfect on salads, in cocktails and more.*

- ◆ Aluminum construction with stainless steel wire blades
- ◆ Unique lever-handle allows for quick and easy operation
- ◆ Sturdy base with non-skid feet
- ◆ Two blades included can be stacked to create a finer cut
- ◆ 4-1/2" x 3-3/4" cutting area
- ◆ NSF listed
- ◆ One year parts warranty

ITEM	DESCRIPTION	UOM	CASE
OS-188	3/16" Blade Slicer	Each	1/2
OS-250	1/4" Blade Slicer	Each	1/2

### **ONION SLICER ACCESSORIES**

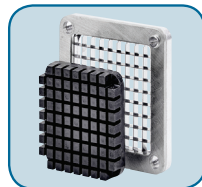
ITEM	DESCRIPTION	UOM	CASE
OS-188B	3/16" Blade Set Assembly for OS-series, 2-Ps/Set	Set	1/10
OS-250B	1/4" Blade Set Assembly for OS-series, 2-Pcs/Set	Set	1/10
KAT-FT	4-Pc Replacement Feet Set	Set	1
KAT-BS-OT	4-Pc Replacement Bushings	Set	1

# KATTEX



HCD-250

NSF HCD-SERIES



Replacement blade and block

## CHOPPERS/DICERS

The Kattex Chopper/Dicer produces perfectly diced onions, tomatoes and cucumbers too.

- ◆ Cast aluminum construction with stainless steel blades
- ◆ Sturdy base with non-skid feet
- ◆ 3-3/8" x 3-3/8" cutting area
- ◆ NSF listed
- ◆ One year parts warranty

ITEM	DESCRIPTION	UOM	CASE
HCD-250	1/4" Blade Dicer	Each	1/4
HCD-375	3/8" Blade Dicer	Each	1/4
HCD-500	1/2" Blade Dicer	Each	1/4

## CHOPPER / DICER ACCESSORIES

ITEM	DESCRIPTION	UOM	CASE
HCD-250BK	1/4" Replacement Blade & Block for HCD-series	Set	1/10
HCD-375BK	3/8" Replacement Blade & Block for HCD-series	Set	1/10
HCD-500BK	1/2" Replacement Blade & Block for HCD-series	Set	1/10
HCD-BR	2-Pc Black Rubber Ring	Set	1/50
KAT-FT	4-Pc Replacement Feet Set	Set	1
KAT-BS-FH	4-Pc Replacement Bushings	Set	1



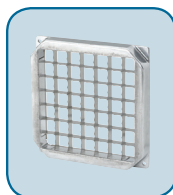
TLC-1

NSF TLC-SERIES

## LETTUCE CUTTER

- ◆ Aluminum frame with easy-grip handle and stainless steel blade with 49 square cuts
- ◆ Cuts lettuce into 1" x 1" slices in less than 1 minute
- ◆ Rubber feet prevent slipping/scratching on work surface
- ◆ 7" x 7" cutting area
- ◆ NSF listed
- ◆ One year parts warranty

ITEM	DESCRIPTION	UOM	CASE
TLC-1	Lettuce Cutter	Each	1/2
TLC-1-B	Replacement Blade for TLC-1	Each	1/10
KAT-FT	4-Pc Replacement Feet Set	Set	1
KAT-BS-OT	4-Pc Replacement Bushings	Set	1



TLC-1-B



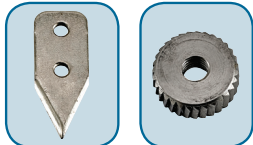
CO-3

CO-3 in use

**STAINLESS STEEL BLADE AND GEAR PORTABLE CLAMP INCLUDED**



CO-3 portable clamp



CO-3B

CO-3G

## PREMIUM MANUAL CAN OPENER

Our premium European-made heavy-duty nickel-plated can opener is fitted with a removable clamp, making it ideal for on-the-go operations that require flexibility. The rust-resistant stainless steel blade and gear opens various can sizes up to #10.

- ◆ Includes base, blade, gear and installation kit for mounting on wooden or stainless steel work tables
- ◆ One year parts warranty

ITEM	DESCRIPTION	UOM	CASE
CO-3	Premium Manual Can Opener, Nickel Plated Steel Base	Each	1/12
CO-3B	1-Pc S/S Replacement Blade for CO-3	Each	1
CO-3G	1-Pc S/S Replacement Gear Set for CO-3	Each	1



CO-1

CO-1 in use

## STANDARD #1 MANUAL CAN OPENER

The go-to industry standard steel body can opener, made for heavy usage kitchen environments that require processing of up to 50 cans a day. Opens various can sizes up to #10.

- ◆ Includes base, blade, gear and installation kit for mounting on wooden or stainless steel work tables
- ◆ The extra-durable blade and gears are interchangeable with most other can opener brands
- ◆ One year parts warranty

ITEM	DESCRIPTION	UOM	CASE
CO-1	Manual Can Opener, Cast Iron Body	Set	1
CO-1B	2-Pc Replacement Blade Set for CO-1	Set	24/288
CO-1G	1-Pc Replacement Gear Set for CO-1	Each	12/144



CO-1B

CO-1G

**NOTE: WARRANTY DOES NOT COVER THE PUSHER BLOCKS AND BLADE ASSEMBLY BLOCKS (PLUS PARTS).**

WINCO warrants to the original purchaser of new equipment and non-electrical food preparation products (other than blades), when installed in accordance with our instructions within North America and subjected to normal use, is free from defects in material or workmanship for a period of 1 year. The labor warranty is one year from original installation or 18 months from actual factory shipment date, whichever date occurs first.

**THIS WARRANTY IS IN LIEU OF ALL OTHER WARRANTIES, WHETHER EXPRESSED OR IMPLIED. WINCO EXPRESSLY DISCLAIMS ANY IMPLIED WARRANTY OF MERCHANTABILITY OR EXPRESSED OR IMPLIED WARRANTY OF FITNESS FOR A PARTICULAR PURPOSE.**

**WINCO'S OBLIGATION AND LIABILITY UNDER THIS WARRANTY IS EXPRESSLY LIMITED TO REPAIRING AND REPLACING EQUIPMENT THAT PROVES TO BE DEFECTIVE IN MATERIAL OR WORKMANSHIP WITHIN THE APPLICABLE WARRANTY PERIOD.**

**IN NO EVENT SHALL WINCO BE LIABLE FOR INCIDENTAL OR CONSEQUENTIAL DAMAGES TO BUYER OR ANY THIRD PARTY, INCLUDING, WITHOUT LIMITATION, LOSS OF PROPERTY, PERSONAL INJURY, LOSS OF BUSINESS OR PROFITS OR OTHER ECONOMIC LOSSES, OR STATUTORY OR EXEMPLARY DAMAGES, WHETHER IN NEGLIGENCE, WARRANTY, STRICT LIABILITY, OR OTHERWISE.**

*This warranty is given only to the first purchaser from a retail dealer. No warranty is given to subsequent transferees.*

*Warranty does not cover product failures caused by: failure to maintain, neglect, abuse, damage due to excess water, fire, normal wear, improper set up and use. Periodic maintenance is not covered.*

*This warranty is not in force until such time as a properly completed and digitally signed Installation/Warranty Registration has been received by WINCO within 30 days from the date of installation.*

#### WARRANTY SERVICE

**To initiate warranty service contact: [equipservice@wincous.com](mailto:equipservice@wincous.com) or call: 973-295-3899**

**DO NOT send unit to WINCO® without first contacting our customer service department.**

#### REGISTER ONLINE AT:

<http://support.wincous.com>

**Proof of purchase is required to extend warranty more than 1 year from date of shipment from the factory.**

**THE FOREGOING WARRANTY PROVISIONS ARE A COMPLETE AND EXCLUSIVE STATEMENT BETWEEN THE BUYER AND SELLER. WINCO® NEITHER ASSUMES NOR AUTHORIZES ANY PERSONS TO ASSUME FOR IT ANY OTHER OBLIGATION OR LIABILITY IN CONNECTION WITH SAID EQUIPMENT.**

**Examples of items not covered under warranty, but not limited to just these items:**

1. Acts of God, fire, water damage, burglary, accident, theft.
2. Freight damage.
3. Improper installation or alteration of equipment.
4. Use of generic or after-market parts.
5. Repairs made by anyone other than a WINCO® designated service provider.
6. Lubrication.
7. Expendable wear parts, adjustable feet, blown fuses, lamps, etc.
8. Cleaning of equipment.
9. Misuse or abuse.



**DWL International Trading, LLC**

#### **New Jersey Headquarters**

65 Industrial Road  
Lodi, NJ 07644  
Tel: 1-888-946-2682  
Fax: 1-888-946-2632

#### **California Distribution Center**

14950-14952 Valley View Ave.  
La Mirada, CA 90638  
Tel: 1-888-946-2652  
Fax: 1-562-926-5678

#### **Florida Distribution Center**

10800 NW 103rd St.  
Bldg 22, Ste 11,  
Miami, FL 33178  
Tel: 1-786-536-4656